

## EMPLOYEES REPORT COVID-19 SITUATIONS TO:

### Human Resources

Cbrow237@nccu.edu

919-530-5144 (week days)

984-464-2735 (after hours)

### Environmental Health & Safety

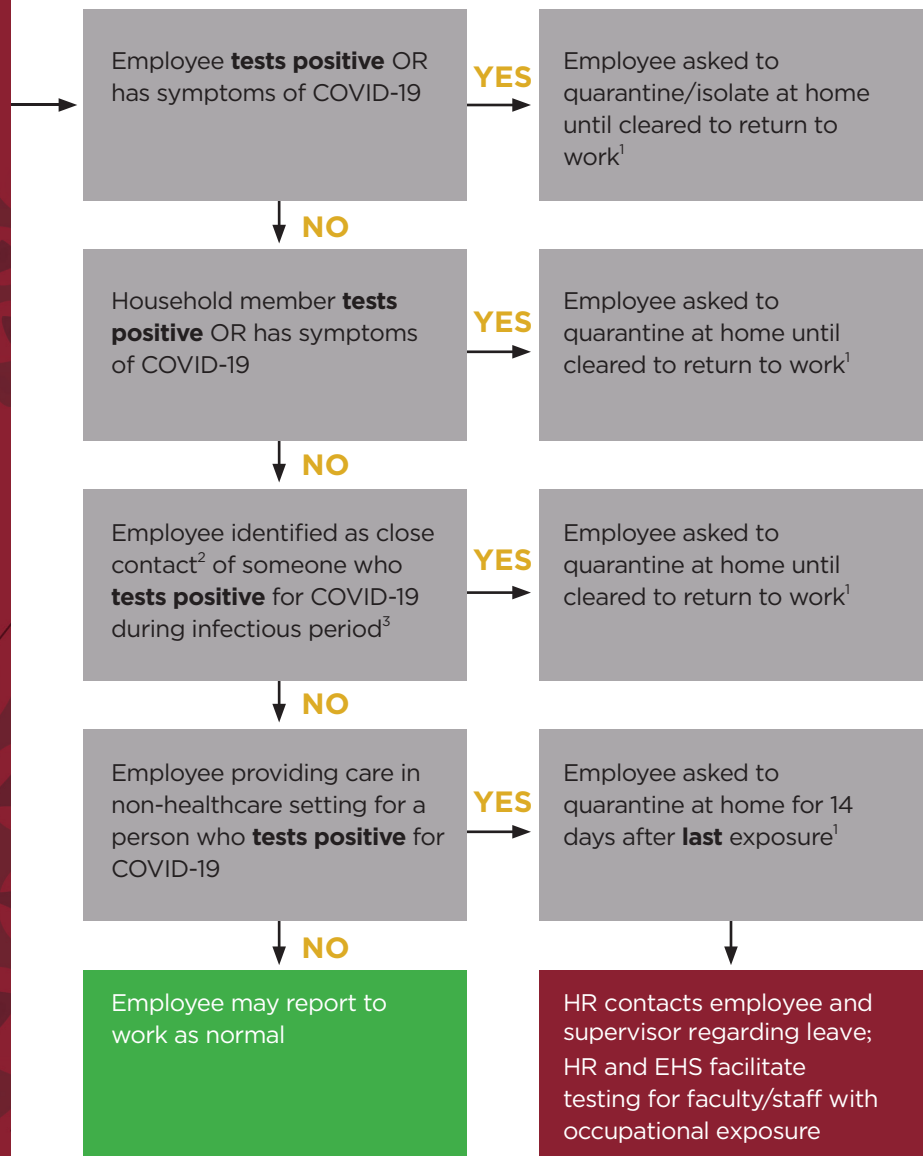
klongwit@nccu.edu

919-357-4061 (24/7)

*Family or others may notify for employees who are hospitalized or otherwise incapacitated.*



**NCCentral**  
UNIVERSITY



### <sup>1</sup>RETURN TO WORK GUIDELINES FROM CDC

**Quarantine = Date of last close contact + 14 days isolation**

#### Symptoms consistent with COVID-19 with or without positive test result

- At least 10 days have passed since symptoms first appeared and
- At least 24 hours have passed since last fever without the use of fever-reducing medications and
- Symptoms have improved

#### Asymptomatic people with positive test result

- At least 10 days have passed since the date of positive COVID-19 test

### <sup>2</sup>CDC DEFINITION OF CLOSE CONTACT

- Being within 6 feet of someone who has COVID-19 for at least 15 minutes
- Providing care in a non-healthcare setting to someone who is sick with COVID
- Direct physical contact with COVID-19 positive person (touched, hugged or kissed them)
- Sharing eating or drinking utensils
- A person with COVID-19 sneezed, coughed, or somehow got respiratory droplets on you

### <sup>3</sup>CDC DEFINITION OF INFECTIOUS PERIOD

- Symptomatic: 2 days before symptom onset until person meet criteria for discontinuing home isolation
- Asymptomatic: 2 days before the date of specimen collection until they meet criteria for discontinuing home isolation.